

# STANFORD SWIFT

2100 BHP, 110 Ft Crew Boat



## PRINCIPAL PARTICULARS:

Year	: 2004
Builder	: Grandweld Dubai, UAE
Class	: ABS
Flag	: SVG
Call Sign	: J8B3698
IMO	: 9331787
Official No	: 10171

## DIMENSIONS:

Length Overall	: 33.50 M
Beam Over all	: 7.40 M
Depth	: 3.00 M
Max Draft	: 1.145 M
Gross Tonnage	: 161 Tons
Net Tonnage	: 048 Tons
Dead Weight	: 76.06 Tons

## SPEED & FUEL COBSUMPTION:

Max Speed	: 15 knots
Cruising Speed	: 13 knots

## CAPACITIES:

Fuel Oil	: 7,480 USG
Fresh Water	: 8,400 USG
Lube Oil	: 200 USG
Hyd Oil	: 200 USG
Clear deck Space	: 94 M <sup>2</sup>
L: 17 M B	: 5.5 M
Deck Strength	: 1.5 Tons / sq mtr

## AUX. MACHINERIES & OTHER EQUIPMENT

Gen. Service pump	: 30 m <sup>3</sup> /h x 60m
Sewage treatment	: 1 x STP
Oily Water Separator	: 1 x 1 m <sup>3</sup> /h
Fuel Oil Purifier	: 1 x Mab 103b
Water Heater	: 1 x 120 Ltr
Fresh Water Pump	: 1 x 15 M <sup>3</sup> /h x 30 M
Fuel Oil cargo pump	: 1 x 25 M <sup>3</sup> /h x 30 M
Power outlet on deck	: 380V/ 4 outlet
Freezer	: 3.00 CU. M

## MACHINERY:

Main Engines	: 3 x Cummins KTA19-M4
Power Output	: Nominal 2100 BHP Each 700 BHP @ 2100 rpm
Gear Boxes	: ZF 550 ratio 2.593:1
Propellers	: 3 x 5 blade MnBr Fixed Pitch
Generators	: Two Diesel Driven Generator Sets 2 x 83.5 KW / 380v / 50 Hz / 3 Ph
Steering System	: 1 x Electro Hydraulic type

## DECK EQUIPMENT :

Anchor Capstan	: 1 x Windlass
Anchor	: 1 x 105 kg

## ACCOMODATION:

Total No. of Berths	: 8 ( Twin berth )
Min. No. of Crew	: 7
Passengers Seating	: 60 seats

## NAVIGATON / COMMUNICATION:

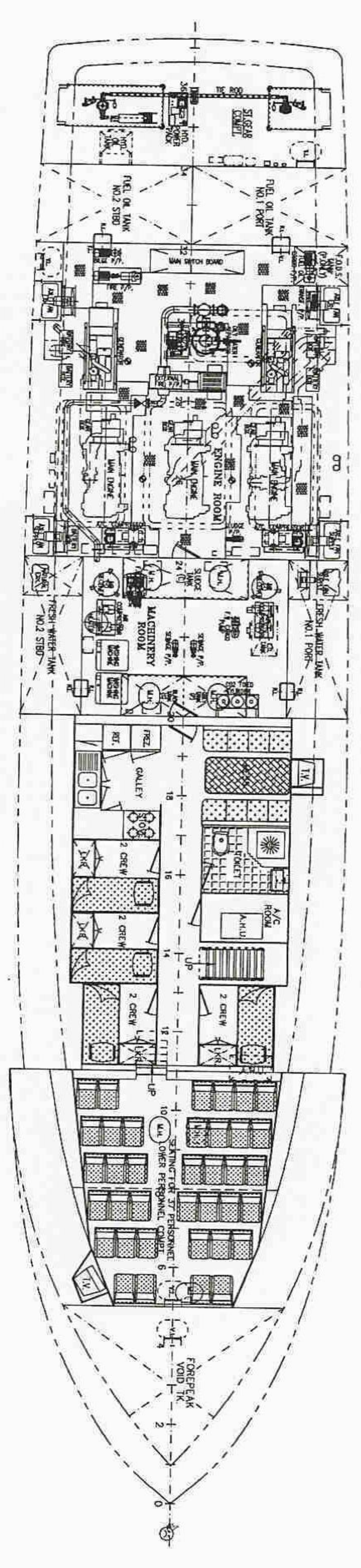
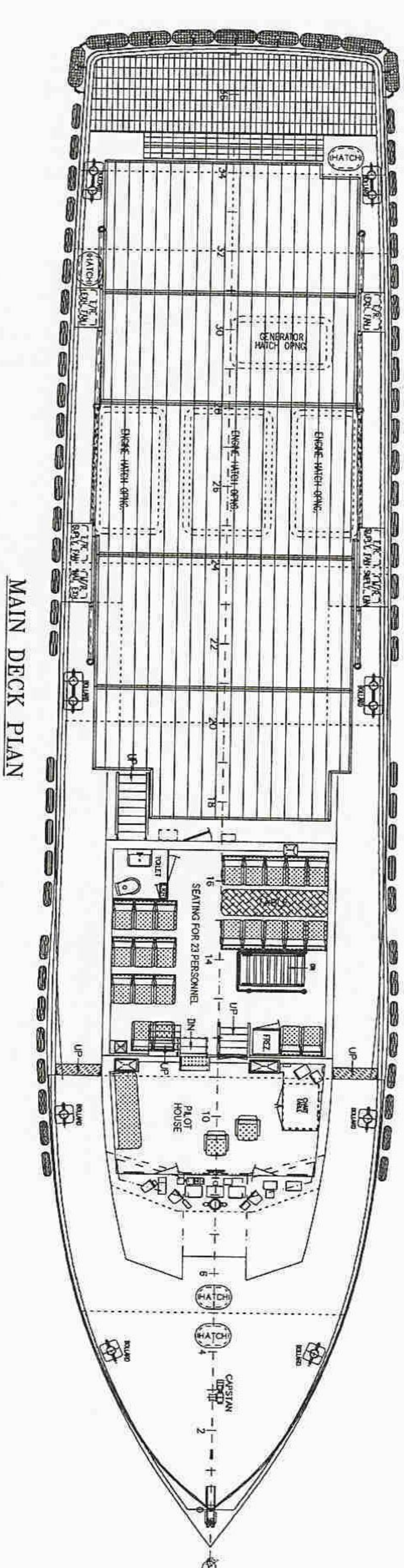
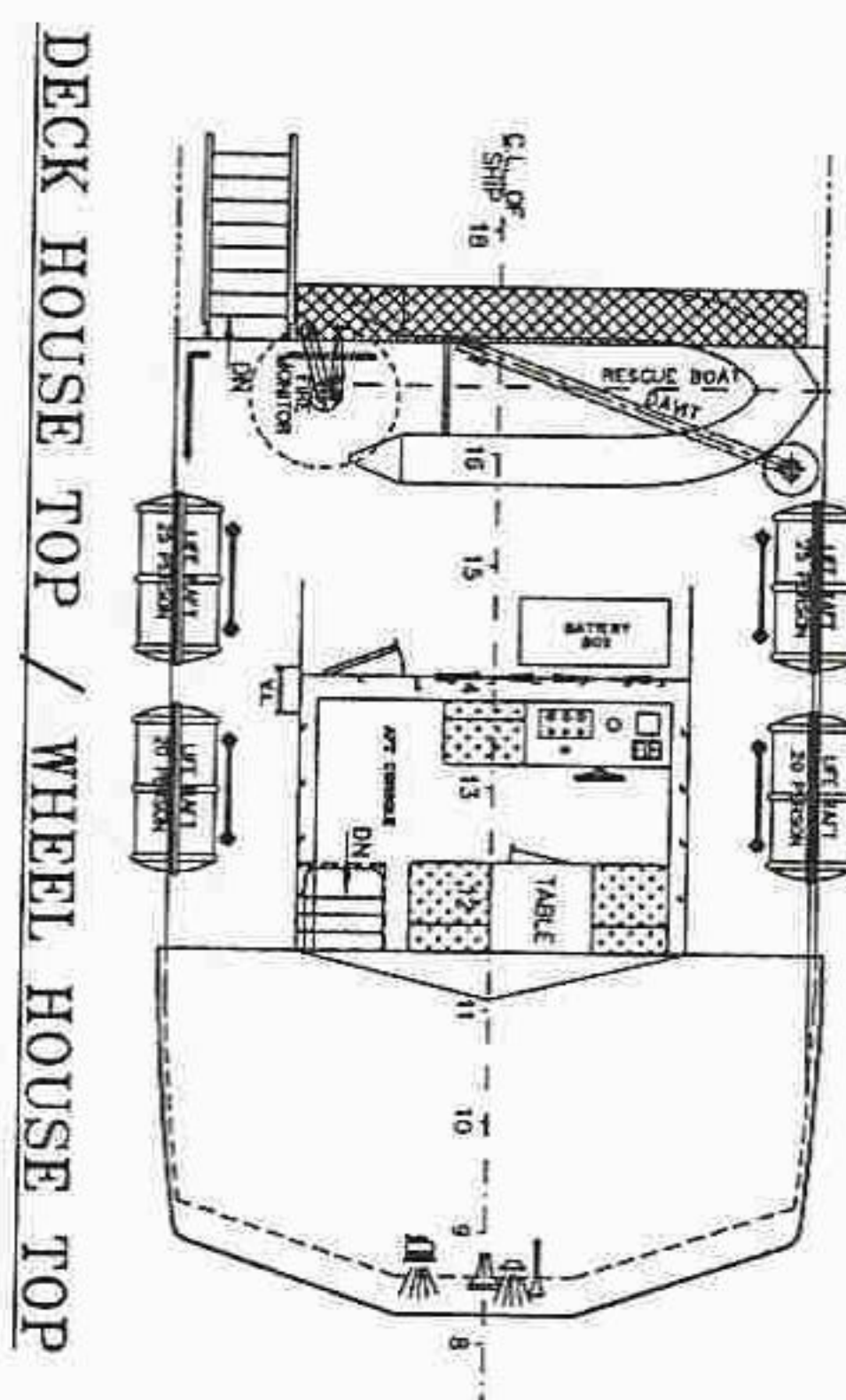
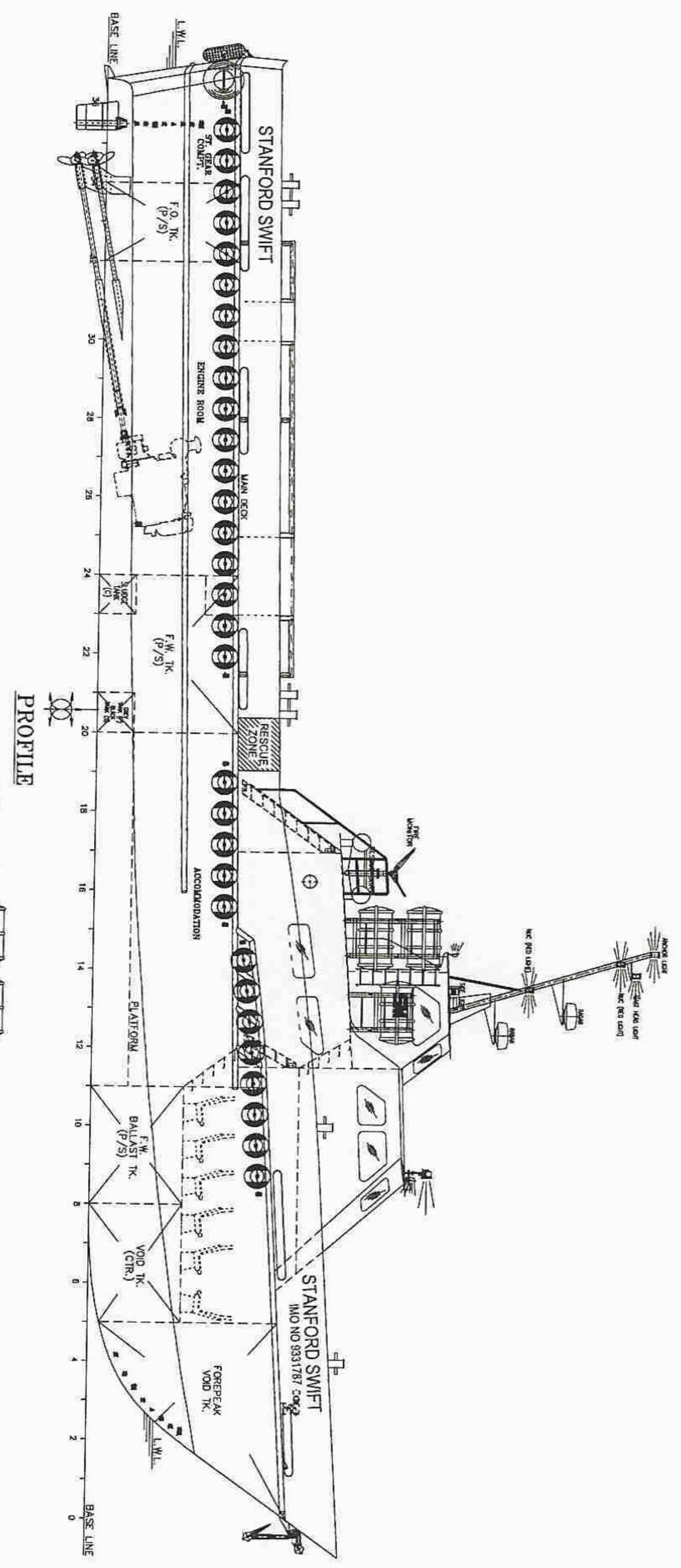
Radar	: 2
Echo Sounder	: 1
Gyro Compass	: 1
Auto Pilot	: 1
Magnetic Compass	: 1
Anemometer	: 1
GPS	: 1
EPIRB	: 1
VHF Radio	: 2
Navtex	: 1
Intercom	: 5 units
HandHeld VHF radio	: 3
GMDSS Area 2	: 1
SART Transponder	: 1
PA system	: 1
Automatic ID System	: 1
Air Horn	: 1

## FIRE FIGHTING / SAFETY:

Gen. services/Fire Pump	: 30 m <sup>3</sup> /hr x 60m
Emergency Fire pump	: 1 x25 m <sup>3</sup> /hr x 42 mtrs
Fire Monitors	: 1 X 120m <sup>3</sup> / hour 8 bar
Rescue Boat	: 10 persons capacity
Medical Oxygen	: 2 nos
BA sets	: 2 nos
Fireman Suit	: 2 nos
Fire Extinguisher	: 1 no.



# GENERAL ARRANGEMENT - STANFORD SWIFT



### MAIN PARTICULARS :

LENGTH OVERALL (HULL)	33.50 METRS. (110'-00")
BEAM MOULDED (BKLD)	7.42 METRS. (24'-4")
DEPTH	03.00 METRS. (10'-00")
DRAFT	01.45 MTR. (4'-9")
SPEED MAX.	18 KNOTS
SPEED CRUISING	16 KNOTS
DECK AREA	82 M. <sup>2</sup>
DECK CARGO	31 TONNES
FUEL OIL	7430 USG
FRESH WATER	4570 USG
OFFSHORE PERSONNEL	60 PERSON
NO. OF CREW	8 (4 CABIN)
CLASS	B.V.
MAIN ENGINES:	3 NOS. CUMMINS KTA 19-M4 700 BHP @ 2100 RPM, WITH GEAR BOX RATIO 2.593:1
GENERATORS:	2 NOS. MARINE GEN. SETS 84kW @ 1500 RPM, 380V 50 Hz 3 Ph.

**NOTE :-**  
DOORS AT WATERTIGHT BULKHEADS SHALL REMAIN CLOSED WHEN VESSEL IS AT SEA.

**AS FITTED**

NO. IN FIELD	DESCRIPTION	DATE	BY	CHKD	APPROV	ISSUE
1	AS FITTED	22/09/2003	SMAY	BY	BY	BY

PROJECT: **GRANDWELD**  
STANFORD SWIFT

SHEET CONTENTS:  
GENERAL ARRANGEMENT

JOB NO. J 422 L  
FILE NO. 03432 R3  
DATE 22/09/2003

DESIGNED BY: AMY  
APPROVED BY: BND

DRAWN BY: CHAG  
CHECKED BY: AMY  
APPROVED BY: BND

SHEET NO. 1 OF 1  
SCALE: 1/25

STANFORD MARINE L.L.C.