

STANFORD CHALLENGER

Anchor Handling / Towing / Supply Fire Fighting-1 Vessel



GENERAL:

Built	: 2005
Flag	: St. Vincent & Grenadines
Class	: Bureau Veritas
Call Sign	: J8B4140
Official No.	: 10613

DIMENSIONS:

Length Overall	: 58.70M
Length Waterline	: 56.31M
Breadth Moulded	: 14.60M
Depth Moulded	: 5.50M
Max Draft	: 4.80M
Deadweight	: 1500Tonnes
GRT	: 1470
NRT	: 441

PERFORMANCE:

Max Speed	: 12 Knots
Economical Speed	: 10 Knots

CARGO CAPACITIES:

Deck Strength	: 7 T/M ²
Clear Deck Area	: 370M ²
Fuel Oil	: 470M ³
Fresh/Drill Water	: 685M ³
Liquid Mud	: 250M ³
Cement Tank	: 4 x 1650ft ³ @ 80 psi
Freezer / Chiller	: 12M ³
Foam	: 13M ³
Detergent	: 13M ³

DISCHARGE RATES:

Fuel Oil	: 1 x 150M ³ /hr @ 75M head
Fresh Water	: 1 x 100M ³ /hr @ 75M head
Mud Pump	: 1 x 70M ³ /hr @ 75M head
Drill Water Pump	: 1 x 100M ³ /hr @ 75M head

ACCOMMODATION:

Berths	: 44 Bunks 1M=2,2M=4,4M=8
Hospital	: 1 Berth

PROPULSION:

Main Engines	: 2 x 2375 BHP = 4750
Main Generator	: 3 x 315Kw/415V/3ph/50Hz
Bow Thruster	: 1 x 315Kw tunnel unit, 5T Thrust
Steering Gear	: 2 x 35 degree - 6 tonne-m
Propulsion	: 2 x CPP Type with Kort Nozzle
Rudders	: Conventional

DECK EQUIPMENT:

Windlass	: 10T @ 9m/min for 38mm Ø chain W/2 cable lifter & 2 warping drums
Bow Anchors	: High-holding type anchors 1305 Kg
Chains	: 440m x 38mm Ø Grade U3 stud link
Capstan	: 2 x 5 tonnes @ 15m/mins
Tugger Winch	: 2 x 10 tonnes @ 15m/mins

TOWING & ANCHOR HANDLING EQUIPMENT:

Bollard Pull	: 64 metric tonnes
Tow Drum (upper drum)	: 1000m x 56 mm wire rope
Anchor Handling	: 1000m x 56 mm wire rope (lower drum)
Braking capacity	: 200 tonnes
First Layer	: low speed 150T @ 6m/min
Mid Speed	: 71T @ 12m/min
High Speed	: 23T @ 36m/min
Stern Roller	: 1.6m Ø & 5m long W/SWL 200T
Shark Jaws (1 no)	: Hydraulic operated type SWL 200T
Tow Pins (1 no)	: Hydraulic operated type SWL 200T
Remote controls from aft control stand in Wheelhouse	

NAVIGATIONAL EQUIPMENTS:

GMDSS Area 1+2+3	1 x Echosounder
1 x Furuno X-Band Radar	1 x GPS Navigator
1 x MF/HF Radio	1 x Gyrocompass
2 x Semi Duplex Marine VHF	1 x Magnetic compass
GMDSS VHFF	1 x Navtex receiver
2 x Inmarsat C	1 x Weather Fax
3 x VHF Radio	1 x Speed Log
1 x Satellite EPRIB	1 x Autopilot
FBB 150	

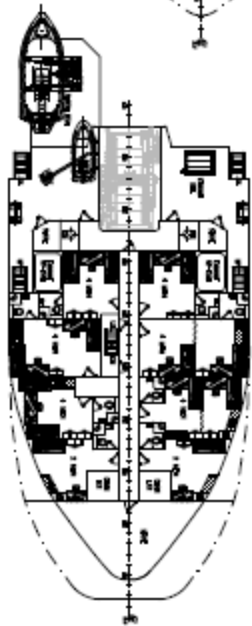
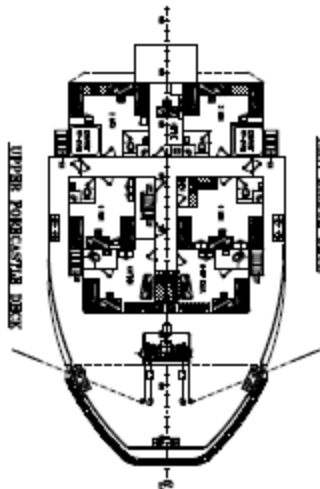
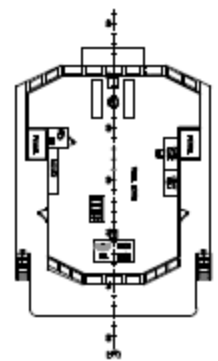
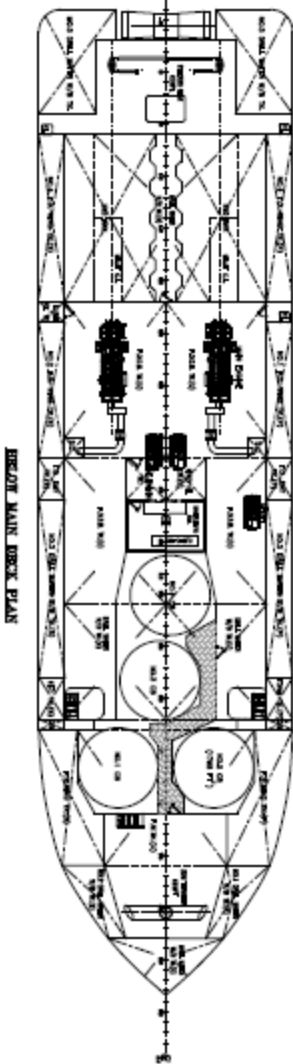
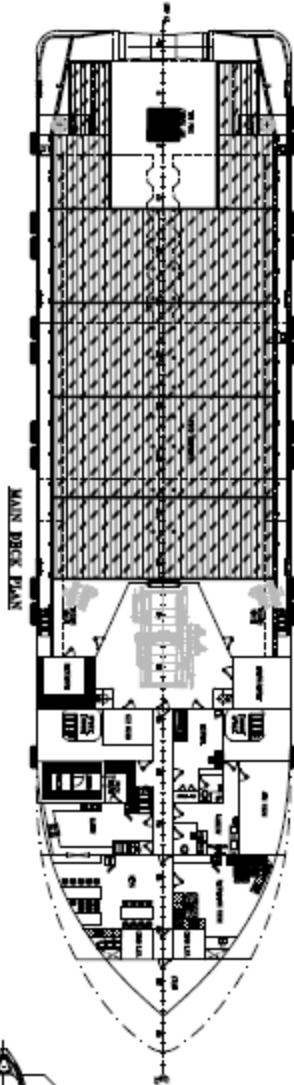
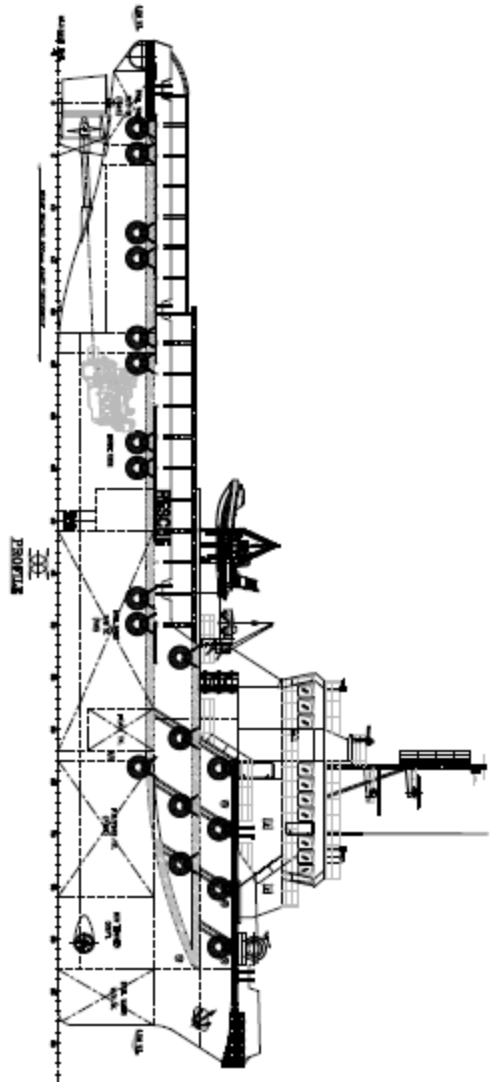
FIRE FIGHTING (FiFi 1):

Fire Pump	: 2 x 1500m ³ /hr @ 14 bar
Monitors	: 2 x 1200m ³ /hr @ 12 bar

OTHERS:

Water Maker	: 1 x 5 tons/day Reverse Osmosis
Sewage Treatment	: 1 x 42 man/day
Oily Water Separator	: 1 x 1M ³ /hr (MARPOL Standard)
Emergency Genset	: 1 x 52 Kw/415V/3Ph/50Hz
Electrical BA Recharging Compressor	75lir/min @ 200 bar
Life Rafts	: 6x 25 men SOLAS
Rescue boat	: 1 x 6 men
Air Breathing App	: 4 sets
FRC	: 1 X 15 with deisel engine

GENERAL ARRANGEMENT - STANFORD CHALLENGER



MAIN PARTICULARS	
LENGTH O.A.	84.70M
LENGTH VAPORLINE	84.80M
LENGTH B.P.	84.80M
BREATHING MOUNTING	14.80M
DECKHULL MOUNTING	8.80M
DISCHARGE BRACKET MOUNTING	4.00M
DISCHARGE BRACKET MOUNTING	13.0 KNOTS
DISCHARGE BRACKET MOUNTING	80 KNOTS
COMPLEMENT	18 MEN

STANFORD CHALLENGER	
NO.	101
NAME	STANFORD CHALLENGER
TYPE	GENERAL PURPOSE
STATUS	NEW
DATE OF DELIVERY	15.07.20
DELIVERED BY	STANFORD MARINE LTD
DESIGNED BY	STANFORD MARINE LTD
CONSTRUCTED BY	STANFORD MARINE LTD
REGISTRY	STANFORD MARINE LTD
REGISTRY NO.	101
REGISTRY NAME	STANFORD CHALLENGER
REGISTRY ADDRESS	STANFORD MARINE LTD
REGISTRY CONTACT	STANFORD MARINE LTD
REGISTRY PHONE	STANFORD MARINE LTD
REGISTRY FAX	STANFORD MARINE LTD
REGISTRY EMAIL	STANFORD MARINE LTD
REGISTRY WEBSITE	STANFORD MARINE LTD
REGISTRY SOCIAL MEDIA	STANFORD MARINE LTD