

PRINCIPAL PARTICULARS:

Year Built / Place	May 2014 - China
Call Sign	TBA
Official No	TBA
Class	ABS +A1 (E) Offshore Support Vessel, Oil Recovery Capability Class 1
	UWILD, FiFi Class 1 + AMS + DPS-2
Flag	St. Vincent & Grenadines

DIMENSION:

Length Overall	75.00 m
Length BP	66.04 m
Beam Molded	17.02 m
Depth to Main Deck	7.80 m
Design Draft	6.30 m
Scantling Draft	6.40 m

MACHINERY:

Main Diesel Generators	4 x 1800 kw (total 7200Kw) Cummins
Emergency Generator	1 x 150 kw
Shore Power	1 x 400A Shore Supply Receptacle
Thrusters	2 x 2000Kw 360 deg Azimuths Rolls Royce
Bow Thruster	2 x 700Kw tunnel Thruster

SPEED:

Speed	14 Knots 100% MCR
Type of Fuel	Marine Gas Oil
Fuel Consumption	TBA

CAPACITIES:

Fuel Oil	1282 m ³
Fresh Water	801 m ³
Water ballast/Drill Water	1538 m ³
Dry Bulk	230 m ³
Liquid Mud	497 m ³
Brine / Metanol	252 m ³
Dead Weight	3300 T at Scantling Draft
Deck Cargo Capacity	1750 mt
Cargo Deck Free Area	700 m ²
Deck Strength	7.5T/m ²
Freezer	To store Provision for a period of 30 days
Cooler	To store Provision for a period of 30 days

PUMPS:

Fuel	2 x 80 m ³ /hr @ 80m hd
Fresh Water	2 x 100 m ³ /hr @ 80m hd
Dry Bulk	2 x 75 m ³ / Hr, Simultaneous discharge
Mud / Brine	2 x 75 m ³ /hr @ 20m hd
Methanol	2 x 50 m ³ /hr @ 80m hd

ACCOMMODATION:

One main Cabins	6
Two main Cabins	23
Total beds	52
1 x Hospital	1 bed
Offices	2 for Client 1 ships office
Lounge	1 Lounge / TV Room
Sewage System	58 POB
Fully Air Conditioned	HVAC Integrated with F&G system
Fixed Gas Detection	H2s and LEL

DECK CRANE: 5t @10M

RADIO & NAVIGATION EQUIPMENT:

GMDSS : Area 3
1 x Inmarsat C with GPS
1 x MF/HF-DSC Radio Telephone
2 x VHF-DSC Radio Telephone
1 x SSC Transceiver 6 Channel DSC
1 x 96nm X-band Radar 21" Display
1 x 96nm S band 21" Display
3 x VHF Portable Radios
1 x Magnetic Compass
3 x Gyrocompass
1 x DGPS
1 x Autopilot
1 x Duplex VHF with DSC
2 x simplex VHF 55 Channels
1 x Echo Sounder
1 x Anemometer
1 x Weather Fax Receiver
1 x Auto Telephone System
1 x Sound powered telephone System
1 x PA/ Talkback System
Local Area Network (LAN) connected
1 x TV and Radio system

DP KONGSBERG C Pos DPS-2, with the following reference Systems:

3 x Gyro Compass, 3 x Wind sensors, 3 x VRUs – 3 x DGPS
1 x Cyscan Laser 1 x Radius
HIPAP (Optional)

DECK & AUX. EQUIPMENT:

Anchors	2 x 2640kgs HHP
Chain	46mm U3 grade Tot 550M
Anchor Mooring Windlass	2 x 10t @ - 29m min C/W warping heads
Tugger Winches	2 x 10t @12m min
Capstan	2 x 5t @ 15m min

FIRE EXTINGUISHING SYSTEM:

FiFi Class 1
Pumps - 1600 m ³ /hr @ 125m hd
Monitors 2 x 1200 m ³ /hr one with dual Foam/water (remote Control)
Emergency Fire Pump 35 m ³ /hr @ 60m hd
Fixed Co2 System
Fixed Water mist System
4 x Fireman Outfits
2 x fire Blankets for engine room and galley

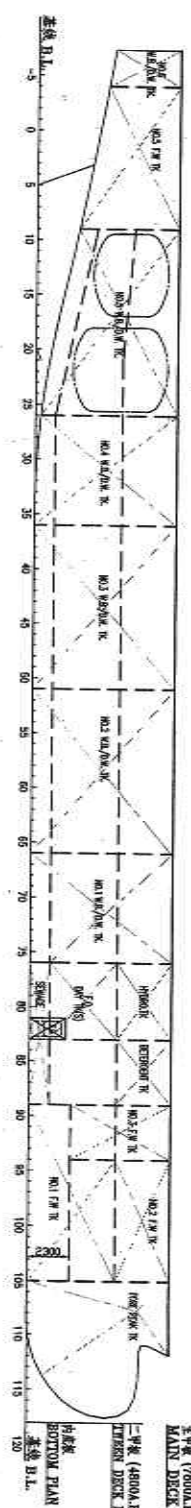
LSA EQUIPMENT:

1 x Diesel Powered FRC for 15 persons with Launch/recovery Davit
8 x 25 man life rafts SOLAS approved each side
16 x lifebuoys SOLAS Approved
60 life jackets as per SOLAS requirement
1 x EPIRB SOLAS approved
1 x line Throwing Apparatus
12 x Parachute Distress Signals
2 x Orange Smoke Signals
SOLAS approved line throwing appliance
1 x first Aid Kit
1 x daylight signaling light
1 x air horn

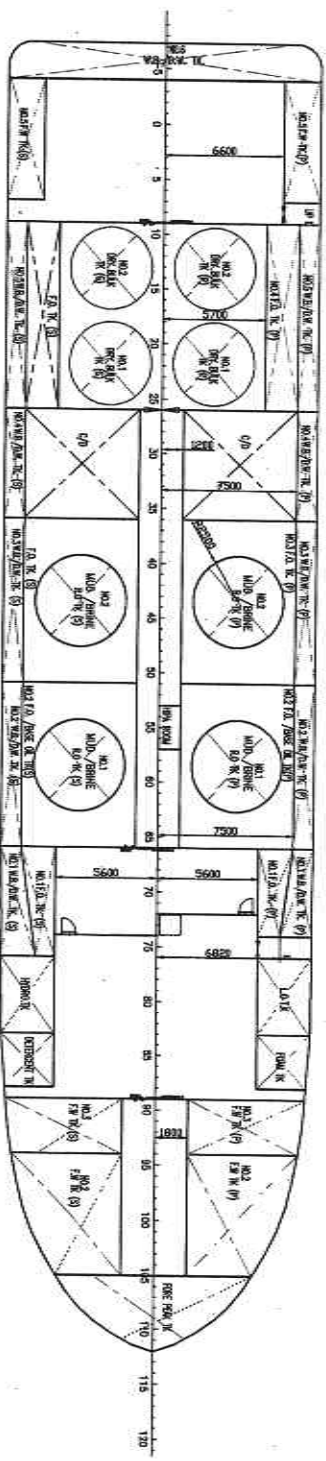
AUXILIARY EQUIPMENT

1 X 10 T/D Fresh Water maker
2 x ships Air Compressor 22m ³ / hr
Oily Bilge Water Separator

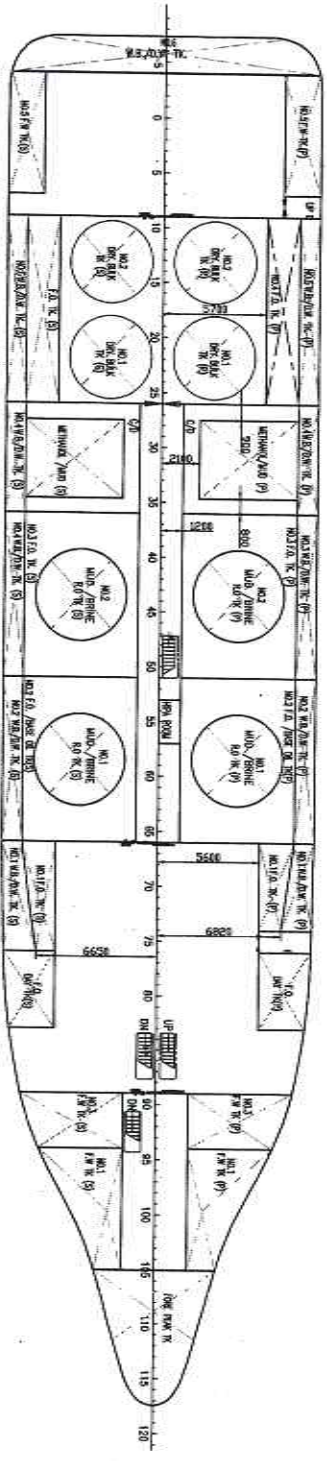
Particulars given are without warranty as to correctness and interested parties must Satisfy themselves by inspection of ships certificate or by other means of vessels Specifications.



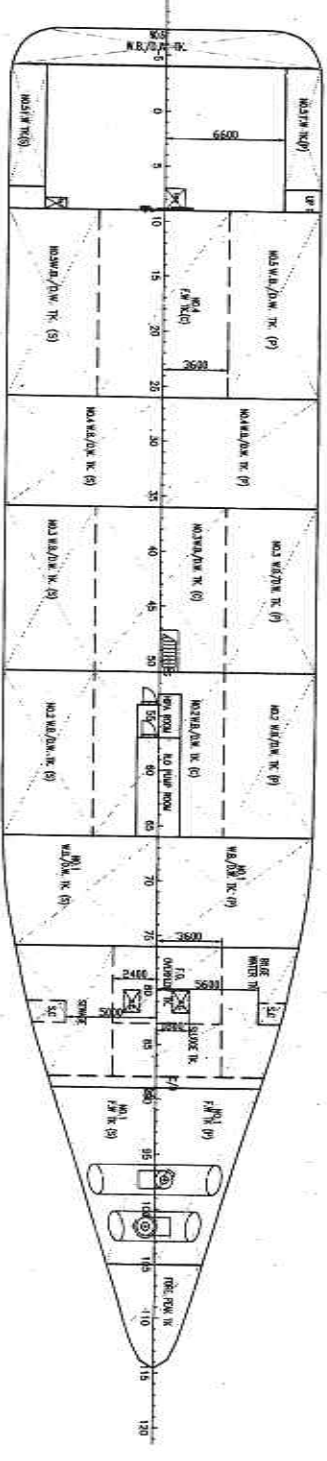
VIEW BELOW MAIN DECK



VIEW BELOW TWEEN DECK PLAN

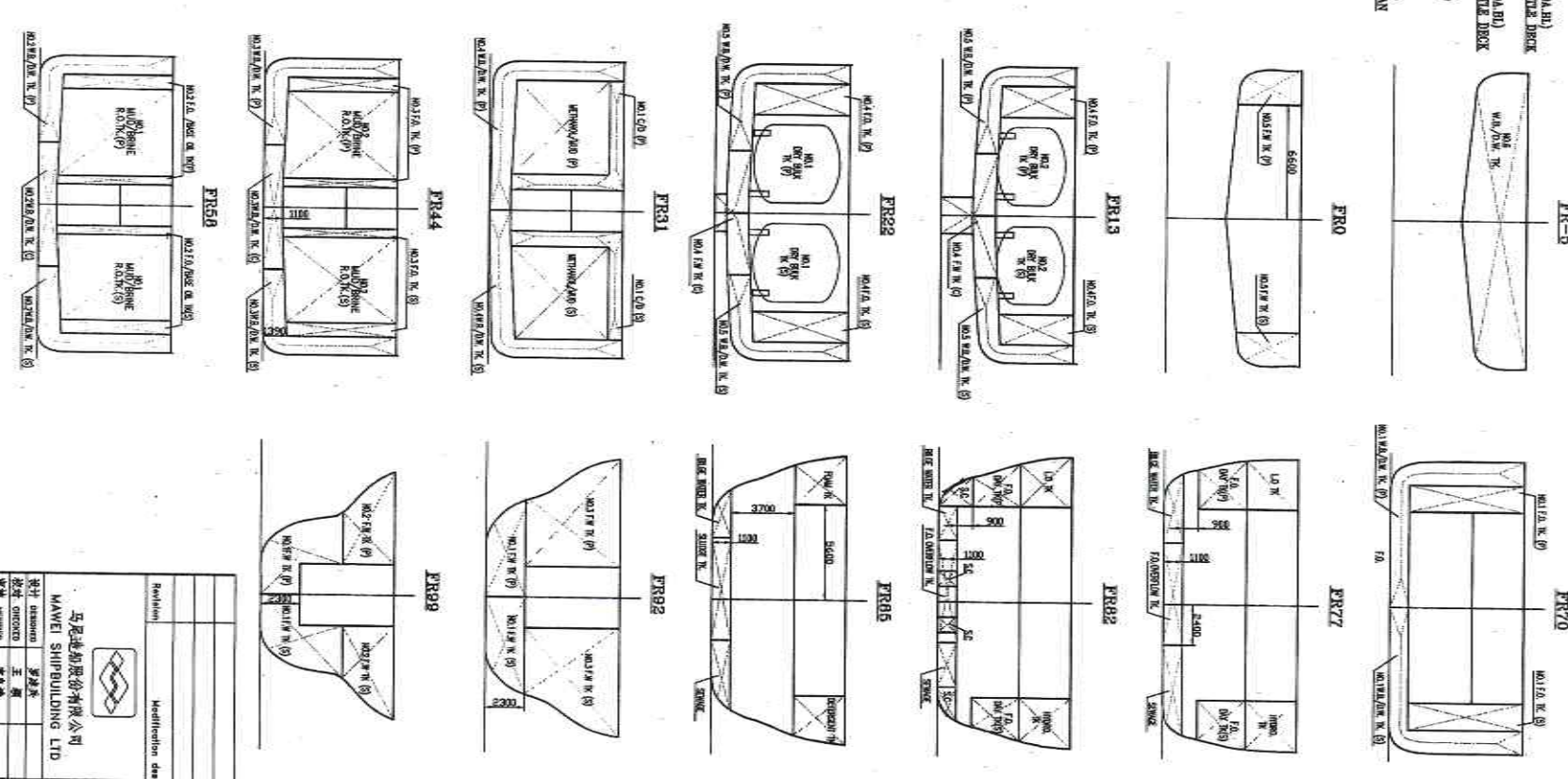


VIEW BELOW BOTTOM PLAN



VIEW SIDE

- 主甲樓 (28100A.H)
- 二層樓 (28100A.H)
- 內底層 (28100A.H)
- 主甲樓 (28100A.H)
- 二層樓 (28100A.H)
- 內底層 (28100A.H)



PRINCIPAL PARTICULARS

- LENGTH OA _____ 75.00m
- LENGTH BP _____ ~66.90m
- BEAM MLD. _____ 17.20m
- DEPTH MLD. _____ 7.80m
- DRAFT DESIGNED _____ 6.30m
- DRAFT SCANTLING _____ 6.40m
- COMPLEMENT _____ 52 MEN
- MAIN ENGINE _____ 1,800KW X4
- SPEED AT: DRAUGHT 5.0 m AHT. 14.3KTS
- DEADWEIGHT AT DRAFT SCANTLING AHT. 3,300 T
- CARGO DECK STRENGTH _____ 7.5t/m²
- CARGO CAPACITY ON DECK _____ 1750 TONNES
- ABS +A1 (E) Offshore Support Vessel.
- Oil Recovery Capability Class 1, UWL/D.
- Fire Fighting Class 1, +AMS + DPS-2

Name	From No.	Capacity	Height	LCG	LCG	LCG	VCG
NO. 1 OIL TANK	1	100	1.5	100	100	100	1.5
NO. 2 OIL TANK	2	100	1.5	100	100	100	1.5
NO. 3 OIL TANK	3	100	1.5	100	100	100	1.5
NO. 4 OIL TANK	4	100	1.5	100	100	100	1.5
NO. 5 OIL TANK	5	100	1.5	100	100	100	1.5
NO. 6 OIL TANK	6	100	1.5	100	100	100	1.5
NO. 7 OIL TANK	7	100	1.5	100	100	100	1.5
NO. 8 OIL TANK	8	100	1.5	100	100	100	1.5
NO. 9 OIL TANK	9	100	1.5	100	100	100	1.5
NO. 10 OIL TANK	10	100	1.5	100	100	100	1.5

船名: 平台供应/油油回收船
 船型: 平台供应/油油回收船
 船东: 马尼拉船务有限公司
 设计: 马尼拉船务有限公司
 批准: 马尼拉船务有限公司
 日期: 2021-11-14
 比例: 1:100
 图号: MW629-020-03
 设计: 马尼拉船务有限公司
 批准: 马尼拉船务有限公司
 日期: 2021-11-14
 比例: 1:100
 图号: MW629-020-03