

M. V. FIREBIRD-I

4050 BHP, 118 FT. Fast support Vessel



BUILT

Built	:	Sept 2007
Classification	:	+A1, HSC "Crew boat", + AMS
Registry / Flag	:	St. Vincent & Grenadines
IMO No	:	9467835

MAIN PARTICULARS

Length Overall	:	118.1 ft	36.0 m
Beam	:	24.9 ft	7.6 m
Moulded depth	:	12.0 ft	3.65 m
Moulded draft	:	6.2 ft	1.85 m
Summer Freeboard	:	5.9 ft	1.788 m
Air Gap from Keel	:	41.01 ft	12.5 m

CARGO DECK

Deck Cargo	:	+/- 80 M tons
Clear Deck Space	:	44.13 ft x 18.37 ft 13.45 m x 5.6 m
Clear Deck Area	:	810.74 sq.ft 75.32 sq.m
Safe Deck Loading	:	2.0 t per sq.m
Cargo Railing Height	:	3.9 ft 1.2 m

Note: Adequate cargo retainers & lashing lugs on both sides for securing deck cargo

TONNAGE

GRT	:	230
NRT	:	70
Dead weight (DWT)	:	115

MACHINERY

Main Engines	:	3
Propulsion	:	Triple screw
Make / Type	:	Cummins KTA38-M2
Total BHP / KW	:	3 x 1,350 BHP @1900 rpm
Bow Thruster	:	1 unit 92 HP
Propellers	:	3 Fixed Pitch, Nickel Alum Bronze

PERFORMANCE

Max Speed	:	21 knots @ 100% MCR
Economical Speed	:	18 knots @ 85% MCR
Type	:	3 x Weatherproof Electrical Sockets
Power Supply	:	3 phase / 50Hz / 41 5V
Shore Power connection:	:	Yes

ACCOMMODATION

Cabins / Berths	:	4 / 8
Hospital / Owners	:	1 bunk c/w toilet on main deck
Seating	:	60 Reclining Aircraft Type: Economy Seats
Toilets	:	2 for passenger use only
Entertainment	:	2 TV / Movie Screen

GENERATING SETS (AUXILIARIES)

Auxiliary Engines	:	2 x 164 BHP @ 1,500 rpm
Make / Type	:	2 x Cummins CSMX TA5
Alternators	:	STAMFORD UCM274G, 2 x 99 KW
Vessel Power Supply	:	415/220 V AC, 50Hz, 3ph + 24 Volt DC

ELECTRICAL (DECK OUTLET)ELECTRONICS AND CONTROLS

GMDSS	:	Furuno A1+A2
VHF	:	2 Furuno FM-8500 + 3 hand held + 1 Furuno 2510
SSB Radio	:	Furuno FS-1 570 + Furuno FS-1 503 (non GMDSS)
Satellite Tele / Fax	:	Trachphone Mini-M
Email	:	Globe wireless
GPS	:	Furuno RD-30
Depth / Echo Sounder	:	Autopilot SIMRAD Roberson AP 35
Gyro Compass	:	Roberson RGC-50
Magnetic Compass	:	4" Seamaster
Autopilot	:	Simrad AP35
Navtex	:	Furuno NX-500 518 Khz
Wind Speed Indicator	:	RO WIND/RD-30/PC-208L
Intercom System	:	Vingtor Pro-700
Search Lights	:	Perko LSLT-PKO-CC12, 1000W
EPIRB	:	McMurdo E3A
SART / AIS	:	McMurdo S4 / Furuno FA-100

TANK CAPACITIES AND PUMPS

Fresh Water	:	25m ³ @ 30m ³ /Hr
Fuel Oil	:	68.4m ³ @ 23m ³ /Hr

OIL POLLUTION TANK CAPACITY AND CONTROL

Dirty Oil Tank	:	0.8 m ³
Dispersant	:	1.0 m ³

LIFE SAVING (SOLAS) EQUIPMENT

Life Rafts	:	3 x 25 persons each side
Life Jackets	:	75
Life Buoys	:	8 on board per SOLAS
Rescue Zone	:	Yes
Scrambling Nets	:	2 units
Other Equipment	:	Pyrotechnics, Line throwing apparatus

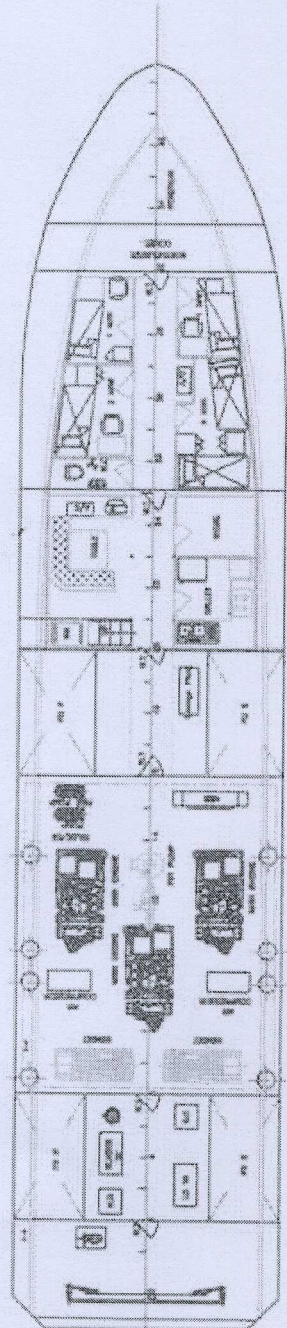
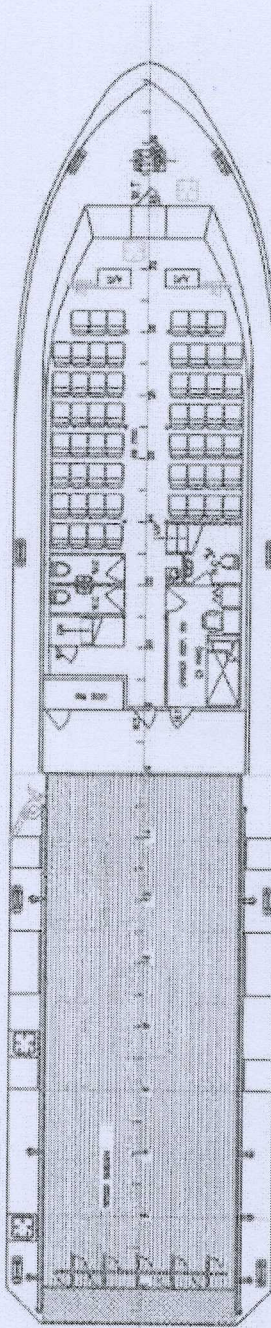
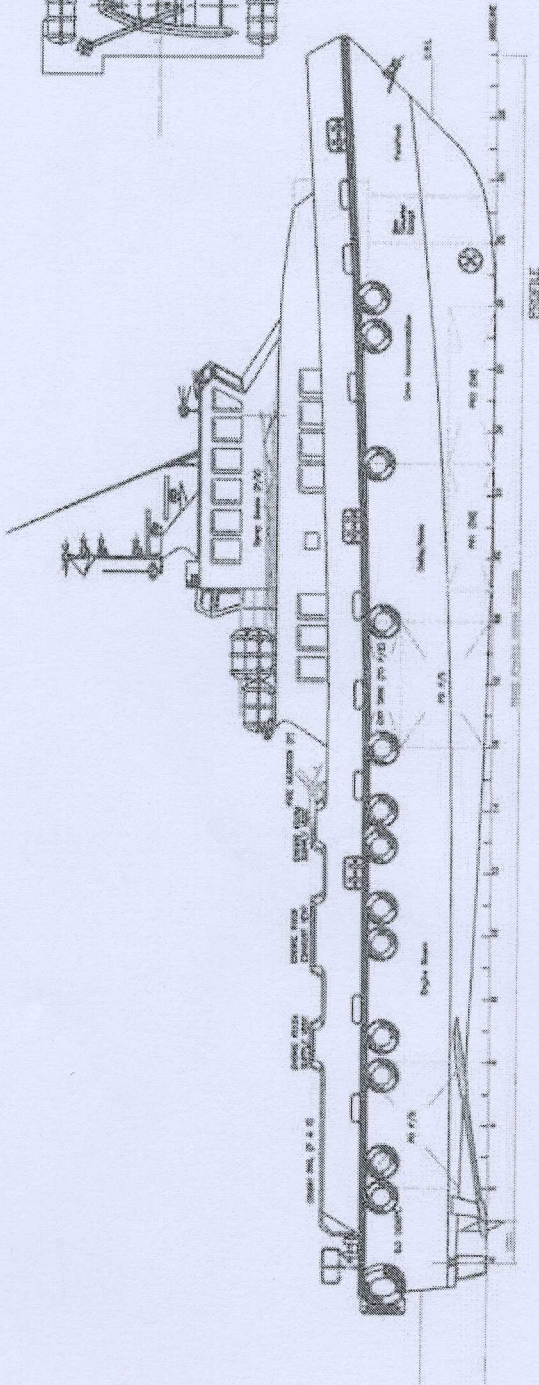
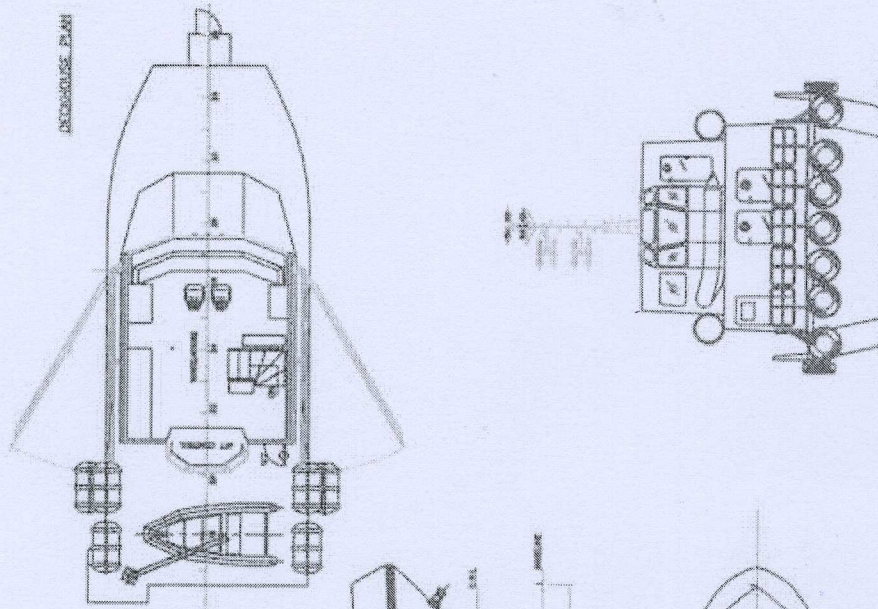
GENERAL FEATURES

Fwd & Aft Bridge Control (Bridge / Maneuvering Stations).	:	
Bow thruster control set at both steering stations.	:	

EMERGENCY RESPONSE FEATURES

Fire Fighting	:	600 m3 with External Fire monitor Additional- 4" Weco connection to platform
Deck Spray Shield	:	Yes
Oil Dispersant Booms	:	Yes
Rescue boat with 20 HP outboard motor :	:	Yes

FIREBIRD - 36 M Aluminium Fast Safety Support Vessel



PRINCIPAL PARTICULARS

LENGTH O.A.	36.00 M
LENGTH B.P.	33.20 M
GRABATH M.L.D.	7.90 M
DEPTH M.L.D.	3.95 M
DESIGN DRAFT	1.85 M
COMPLEMENT	8 CREW
	58 OFFSHORE WORKERS
	2 OWNER REPRESENTATIVES