

# STANFORD GOSHAWK

## 4000 BHP Multi-Purpose Supply Vessel (DP1, FiFi 1)



### PRINCIPAL PARTICULARS:

Year Built : 2010  
Call Sign : J8B4316  
Official no : 10789  
Class : ABS+A1 E "Offshore Support vessel,  
Fire Fighting Class1+AMS+DPS 1  
Flag: : SVG  
GRT/NRT : 1393/413

### DIMENSION:

Length Overall : 57.50m  
Length WL : 55.10m  
Breadth Moulded : 13.80m  
Depth Moulded : 5.50m  
Draft : 4.688m  
Free Board : 0.812m

### SPEED:

Max. Speed : 12.0 kts  
Consumption : 24 hrs @ 100 % MCR

### CAPACITIES:

Fuel oil : 458 cbm  
Fresh Water : 196 cbm  
Drill Water : 369 cbm  
Liquid Mud : 162 cbm  
Bulk cement : 187 ( 4 x 1650 cuft)  
Lube oil : 5.3 cbm  
Dispersant : 13.5 cbm  
Foam : 13.5 cbm  
Deck Cargo : 500 mt  
Deck Area : 376 sqm  
Deck strength : 7t/sqm  
Deadweight : 1292MT  
Freezer : abt 15 cbm  
Cooler : abt 8 cbm

### DISCHARGE CAPACITIES:

Fuel Oil : 1 x 150 cbm/hr @ 75m head  
Fresh water : 1 x 100 cbm/hr @ 75m head  
Drill Water : 1 x 100 cbm/hr @ 75m head  
Liquid Mud : 2 x 75 cbm/hr @ 75 m head  
Bulk cement : 62 x 13 cbm/hr @ 80 psi

### ACCOMMODATION:

One Man cabins : 4 cabins  
Two man Cabins : 6 cabins  
Four Man Cabins : 40cabins  
Total : 50 berths  
1 x Hospital with 2 Bed, fully air conditioned

### MACHINERY:

Main Engines : 2 x 2000 BHP @ 1600 rpm, Cummins QSK60-M  
Propellers : Fixed Pitch 360 Azimuths, SRP 1212FP, SCHOTTEL/Gmbh  
Bow Thruster : 1 x 430 kw Tunnel Thruster Schottel STT330LK  
Generator : Generator 3 x 350kw/ 415 /3ph / 50Hz Diesel driven, Cummins KTA 19  
Emergency Generator : 1 x 70 kw/ 3 ph / 415V/50Hz diesel driven Cummins 6BT 5.9 DP-1  
Engine for FIFI pump : 746kW/1800rpm,Cummins 38 M1

### DECK & AUX EQUIPMENT:

Anchor : 2 x 1590kg HHP anchors  
Chain : Total length 412.5m x 34mm U2 stud link chains  
Anchor Windlass : 1 x electro hydraulic with 2 cable lifter and 2 warping drums  
Winch Rating : 9 mt @ 12m/min for 36mm dia chains  
Capstan : 2 x 5mt @ 15m/min electro hydraulic  
Deck Crane : Sormec Marine Crane M460/3S SWL 18T @ 12M Radius/ 5T @ 36.5 M Radius

### RADIO AND NAVIGATION EQUIPMENT:

GMDSS (Area 3) : 2 x VHF-DSC Radio Telephone  
2 x Inmarsat C with EGC : 1 x EPIRB  
1 x MF/HF- DSC Radio Telephone : 3 x VHF Portable radios  
2 x SART : 1 x VHF/FM Radio Telephone  
1 x Navtex Receiver : 2 x 96m X-band Radar  
1 x A.I.S : 1 x Magnetic Compass  
1 x Kongsberg Joystick Control : 1 x Autopilot  
1 x SSB Radio : 1 x Doppler Speed Log  
1 x GPS Plotter : 1 X PA/ talkback system  
1 x Gyrocompass : 1 x Anemometer  
1 x Weather Fax receiver : 1 x Echo Sounder  
1 X Self Powered Telephone : 1 X Auto Telephone System

### FIRE FIGHTING AND LSA EQUIPMENT:

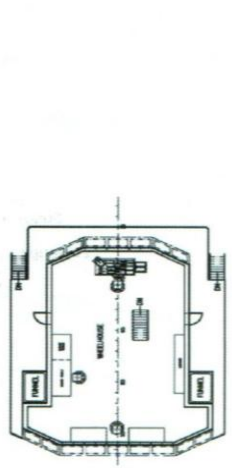
EXTERNAL FIFI : 2 X 1500 cbm/hr@14bar/140 mic /1800 RPM  
Pump : 2 X1200 cbm/hr@12 BAR(with remote control) throw length 120m / throw height 45m  
Monitors : 1 Monitor fitted with double barrel for foam discharge  
1 x Water Spray Curtain around the Hull & Deckhouse  
Engine room water Spray System  
1 x BA recharging compressor of 75lts/min @ 200 bar (optional)

### LIFE SAVINGS

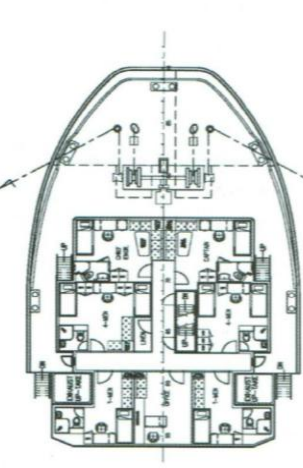
6 x 25 men inflatable Life rafts  
2 x MOB-Light Smoke Signal  
1 x FRC 15 man diesel inboard launch recovery davit (Optional)  
1 X Rigid Inflatable Rescue Boat for 6 persons (with outboard motor)  
5 x 1000W Floodlights  
2 x 2000W Searchlights 10 X EEBD  
1 x daylight Signaling light  
6 X Medical Oxygen Resuscitator

### AUXILIARY EQUIPMENT:

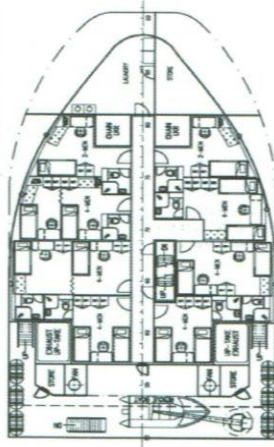
1 x Sewage Treatment Plant suitable for 50 men , ST4A,6000L/day  
1 x 5T/day reverse osmosis Fresh Water Maker, Aquamar Electric  
1 x Air Compressor 9cbm/h @ 10 bar, Atlas Copco LE15-10, Belgium  
1 x Oily Bilge Water Separator , Capacity 1cbm/hr  
1 x Fresh Water Hydrophore Plant, 5000L CSSC( Nantong), China  
Cement System : 2 sets of compressors, 5.6kg/cm2 (80psi) working pressure, 13cbm/ min



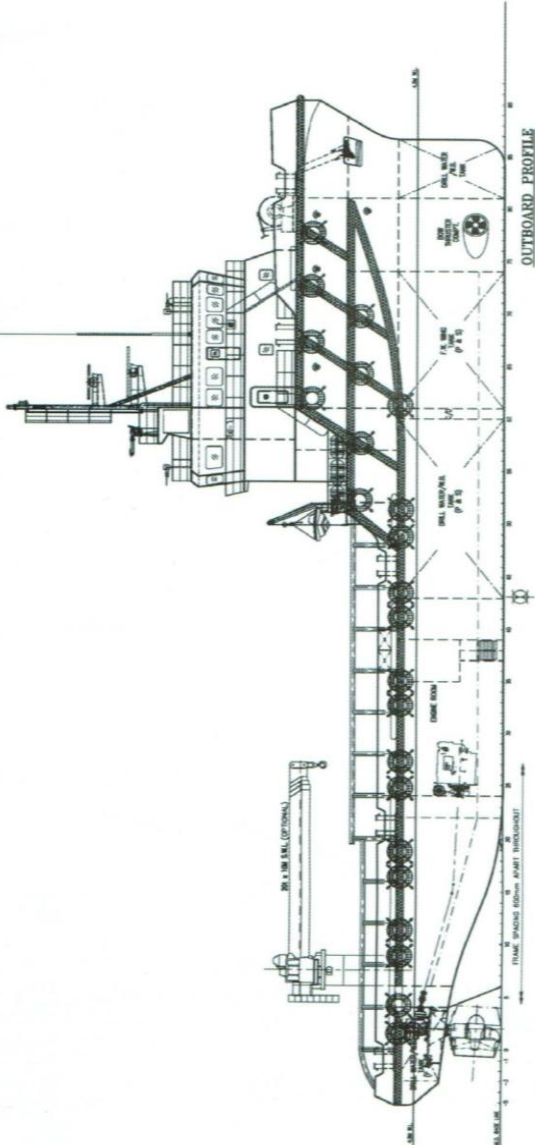
NAV. BRIDGE DECK



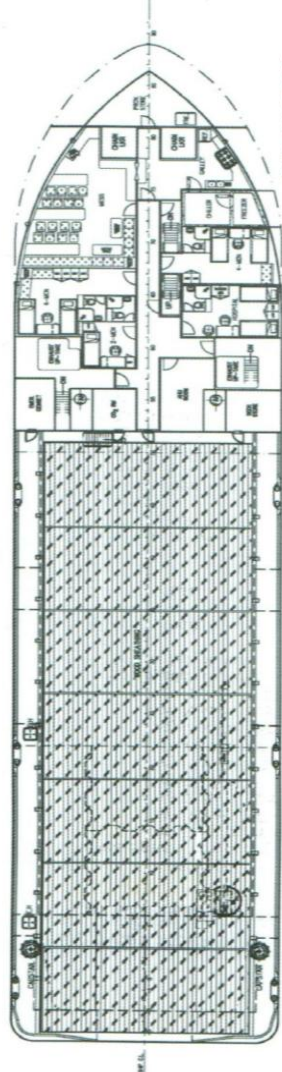
UPPER FORECASTLE DECK



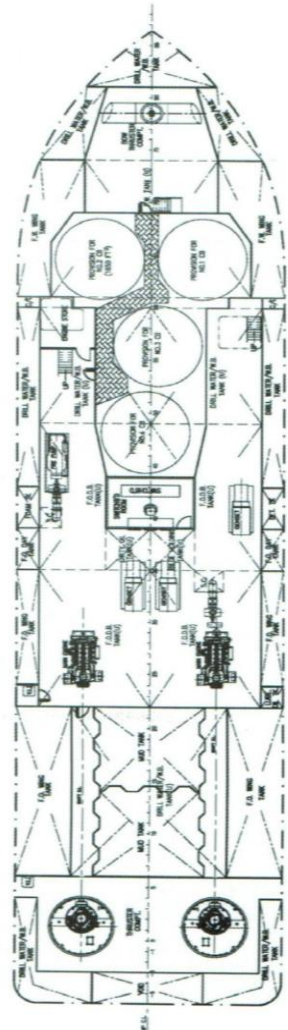
FORECASTLE DECK



OUTBOARD PROFILE



MAIN DECK PLAN



BELOW MAIN DECK PLAN

**PRINCIPAL DIMENSIONS**

- LENGTH OVERALL 57.50 M
- LENGTH WATERLINE 55.10 M
- LENGTH BETWEEN PERPENDICULARS 52.00 M
- BREADTH MOULDED 13.80 M
- DEPTH MOULDED 5.30 M
- DESIGN DRAWT MOULDED 4.30 M
- ACCOMMODATION 50 MEN
- FUEL OIL 40 M<sup>3</sup>
- FRESH WATER 15 M<sup>3</sup>
- DRILL WATER 370 M<sup>3</sup>
- AHD (S.G. - 2.5) 15 M<sup>3</sup>
- DRY BKG TANKS (4 x 1650 FT<sup>3</sup> = 6600 FT<sup>3</sup>) 380 M<sup>3</sup>
- CLEAR DECK AREA (DECK LOADING = 7 T/M<sup>2</sup>) 300 BHP
- TOTAL POWER 120 KNOTS

ALL DIMENSIONS ARE IN METERS UNLESS OTHERWISE SPECIFIED  
 ALL WEIGHTS ARE IN METRIC UNLESS OTHERWISE SPECIFIED  
 ALL MATERIALS ARE TO BE AS SUPPLIED BY THE MANUFACTURER  
 ALL DIMENSIONS ARE TO FACE UNLESS OTHERWISE SPECIFIED

DESIGNED BY: STANFORD GOSHAWK		DATE: 2014-01-10	
DRAWN BY: STANFORD GOSHAWK		SCALE: 1:125	
CHECKED BY: STANFORD GOSHAWK		DRAWING NUMBER: KOM/Q351-G-1	
APPROVED BY: STANFORD GOSHAWK		SHEET NO.: 1	
 <b>KHIAM CHUAN MARINE PTE LTD</b> 15, BELLEVUE TERRACE, SINGAPORE 438582 TEL: +65 6339 8888 FAX: +65 6339 8889 EMAIL: info@khiammarine.com.sg			
<b>56m UTILITY/SUPPLY VESSEL</b> <b>GENERAL ARRANGEMENT</b>			